

檔 號：

保存年限：

## 教育部 書函

機關地址：10051 臺北市中山南路5號

承辦人：謝凱欣

電話：02-7736-5742

電子信箱：kathy@mail.moe.gov.tw

受文者：國立中興大學

發文日期：中華民國110年4月22日

發文字號：臺教文(五)字第1100055487號

速別：最速件

密等及解密條件或保密期限：

附件：計畫說明、常見問題、計畫書範例 (附件一 A09000000E\_11000055487\_doc3\_Attach1.pdf、附件二 A09000000E\_11000055487\_doc3\_Attach2.pdf、附件三 A09000000E\_11000055487\_doc3\_Attach3.pdf)

主旨：印尼教育文化部推動國際移動力獎學金計畫，請踴躍參與，並於本(110)年4月25日前上網完成申請作業，詳如說明，請查照。

說明：

- 一、依據駐印尼代表處教育組本年4月19日印尼教字第1100419002號函辦理。
- 二、印尼教育文化部為鼓勵該國學生參與校園外之各項學術及文化活動，與外國師生及社區連結，近日公布國際移動力獎學金計畫，藉國外合作大學送審通過之課程，提供印尼將就讀大學第四或第七學期之大學生至該國修習，補助項目包括一學期之學費、往返經濟艙機票、住宿費、生活費、書籍費、醫療保險及PCR檢測費，倘因疫情關係可採線上課程，回國後原就讀大學將最高採計20學分，預計於本年9月至12月選送1,000名學生赴海外研習。
- 三、為利印尼教文部掌握報名學校數，請有意願參與之學校先傳送意願書(letter of intent)至subpokjamerdekaglobal@kemdikbud.go.id，並副知駐印尼代表處教育組，並於4月25日前上網完成申請作業，網址：<http://bit.ly/>

國立中興大學



1100006799 110/04/23

ProposalSubmission-IISMA。

四、檢附旨揭計畫說明、常見問題及計畫書範例各1份，如有相關問題請聯繫駐印尼代表處教育組施眉綺秘書，電話：62-21-5153939，電郵：edutwindonesia@gmail.com。

正本：各公私立大學校院

副本：駐印尼代表處教育組

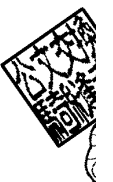


裝



訂

線





Kampus  
Merdeka  
INDONESIA JAYA

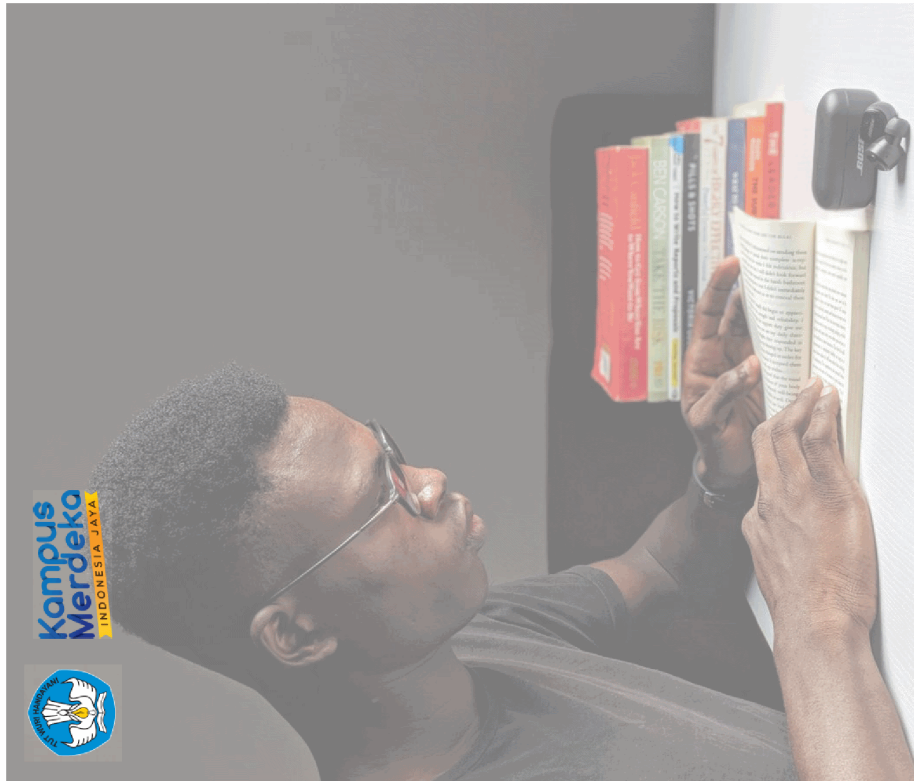


# INDONESIAN INTERNATIONAL STUDENT MOBILITY AWARDS

## Presentation for International Partners

*Presented by: Dr. Eng. Rachmat Sriwijaya, ST., MT., IPM ASEAN Eng*





# INTRODUCTION ✕

Government of Indonesia scholarship scheme to fund 1,000 Indonesian students (Fall, 2021) on mobility program at top universities overseas.

- Undergraduate students spend up to one semester (approx. 16 w) at university partner to study, experience host country culture, and do practical assignments to hone their skills.
- Centrally managed by Directorate General of Higher Education, Kemdikbud (Ministry of Education and Culture or MoEC)
- Open for undergraduate students from all Indonesian higher education institutions.

## Objectives:

- Facilitate Indonesian students to gain knowledge and skills
- exchange ideas and culture, and build network with their peers, academics, and international community overseas.





# ELIGIBILITY for STUDENTS ✕

01



## Language Proficiency

Applicants must pass these minimum scores of language proficiency to enroll for the program: IELTS (6.0), TOEFL iBT (80), TOEFL ITP (550)\*

02



## Nationality & Status

Applicants must possess Indonesian Citizenship and currently enrolled in their 4<sup>th</sup> to 7<sup>th</sup> semester as undergraduate students at Indonesian Universities\*\*

03



## Nomination

Applicants must be nominated by their home university to enroll for this program

\* TOEFL iBT score might limit applicants to apply for programs which require TOEFL iBT/ IELTS

\*\* The home universities should be managed by the Directorate of Higher Education, MoEC





# EXPECTED COMPETENCIES ✕



Source: *Institute for The Future*





## COURSES GUIDELINES

- Prospective university partner to offer courses which **reflect ten competencies** stated in the previous slides (Ten Skills for Future Workforce: Institute for The Future)
- Courses provided should enable students from **different backgrounds** (natural or social sciences) to enroll in the **same course**
- Courses example: Gender Studies and Social Justice, Marketing with a Psychology Emphasis
- Prospective university partner to offer courses worth **1.5 x more than regular semester load** (e.g. regular semester load = 20 credits, university provided courses worth 30 credits). This is requested to provide prospective students choice to select different courses within the same university

### EXPECTED OUTCOME

Students possess valuable global skills which their peers do not acquire

### JUSTIFICATION

Students could obtain basic competencies which reflect their own undergraduate major through courses at home university





Kampus  
Merdeka  
INDONESIA JAYA

## ✕ **COVERAGE**

COST COMPONENT	BUDGET/ PERSON
REGISTRATION FEE	at cost
TUITION FEE	at cost
BOOK ALLOWANCE	IDR 5,000,000
LIVING ALLOWANCE	pre-determined (based on country and city)
HEALTH INSURANCE	pre-determined (based on country)
TRANSPORTATION	at cost
VISA	at cost
SETTLEMENT ALLOWANCE	pre-determined (based on country and city)
PCR TEST	IDR 2,400,000
EMERGENCY FUND	IDR 500,000,000 (for 1,000 students)







# TIMETABLE x





# UNIVERSITIES PREFERENCE ✕

## INTERNATIONALLY RECOGNIZED

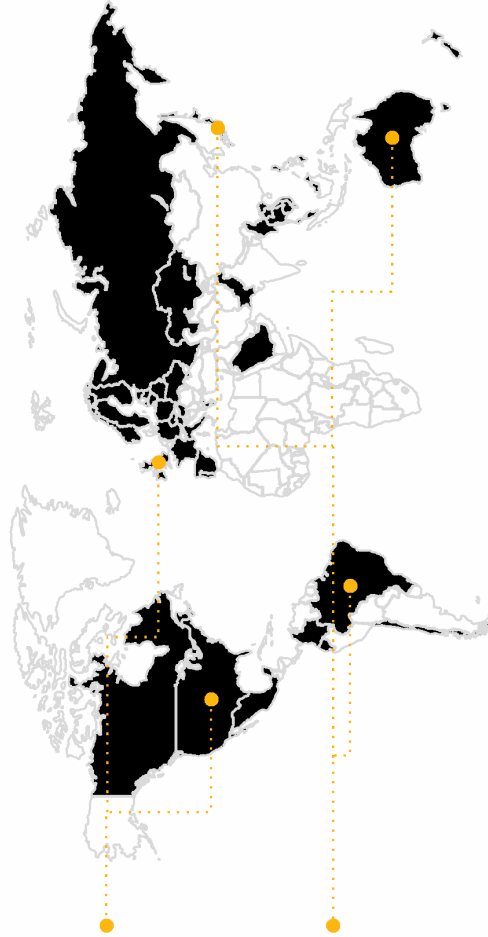
University reputation based on QS  
2021 Rankings standard

## COUNTRY & REGION

Selection from different countries  
to enhance program diversity

## PROGRAM VALUE

Host university's ability to provide  
programs and courses that match  
criteria set by MoEC



R

D

## REQUEST FOR PARTNER UNIVERSITIES

Overseas university partners are expected to be able to:

- Organize undergraduate level classes/courses with:
  - Transcript and certificate of participation issued upon completion. Indonesian students are expected to take up to 20 credit units for this program.
  - Students to spend significant proportion of their time at overseas university to learn certain subjects. They can learn any subjects of their interests **beyond** their field of study at home university
- Organize program for the students to do practical assignment to hone their skills. This program can be delivered in partnership with external provider.
- Organize and facilitate cultural events for the students.
- Provide any necessary services for international students. (e.g. pastoral care)



Kampus  
Merdeka  
INDONESIA JAYA





Kampus  
Merdeka  
INDONESIA JAYA

## DOCUMENTS

R

D

**Interested partner universities to submit a proposal (max 10 pages) which should consist at least:**

- Cover letter confirming university's interest and summarizing key information of the proposal.
- One semester program (brief overview, program description, expected output, draft timetable)
- Key people (roles and responsibilities)
- Budget
- Benefits for Indonesian students
- Contact person
- Proposal should be submitted to:
  - [bit.ly/ProposalSubmission-IISMA](https://bit.ly/ProposalSubmission-IISMA)





## KEY QUESTIONS ✕

“

Can prospective university partner provide a full list of program that align with the criteria outlined above?

“

What health and quarantine protocol are currently enforced in your country?

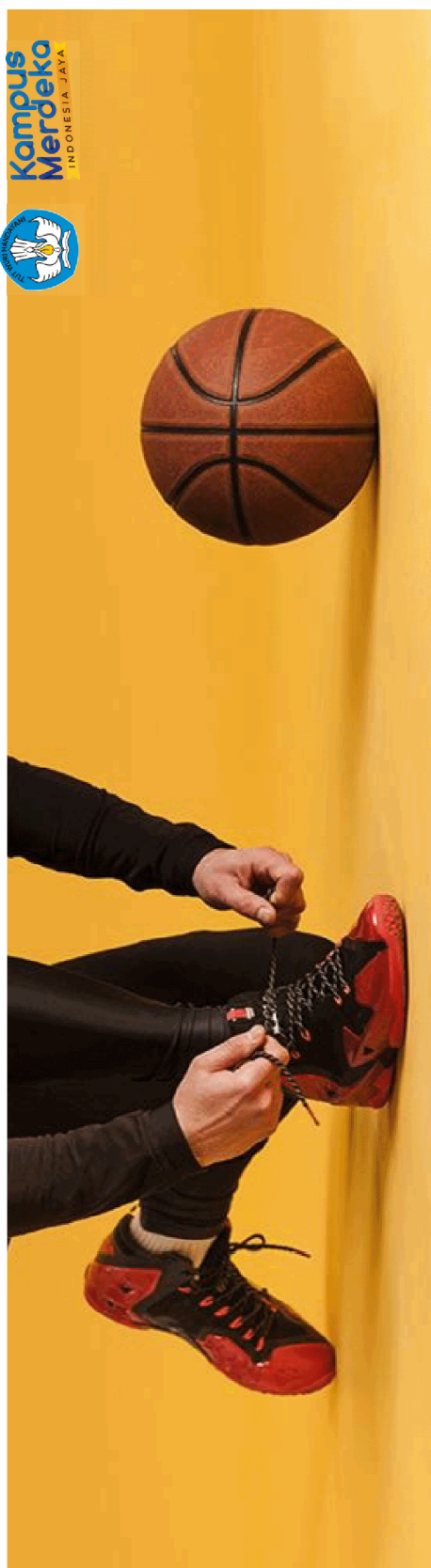
“

Should our student open a new local bank account? Can living allowance for students transferred to your PIC?

“

Please advise us with details on the process of student visa issuance





# invitation ×

Proposal Latest Submission: 16 April 2021







# THANKS

Do you have any questions?

Contact us:

- [subpokja-merdekaglobal@kemdikbud.go.id](mailto:subpokja-merdekaglobal@kemdikbud.go.id)
- [Beasiswa.iisma@gmail.com](mailto:Beasiswa.iisma@gmail.com)



Kampus  
Merdeka  
INDONESIA JAYA

## TARGETTED UNIVERSITIES ✕

### 10 QS WUR 100 UNIS

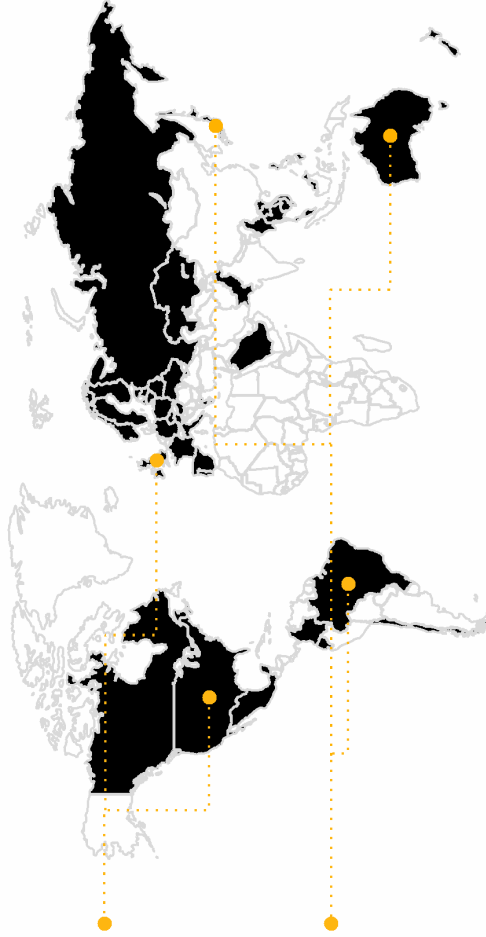
Rankings based on QS  
2021 standard

### 40 QS WUR 300 UNIS

Spread throughout different  
countries & continents

### 1,000 STUDENTS

Outbound students from  
universities under the  
Directorate General of  
Higher Education





FREQUENTLY ASKED QUESTIONS  
BASED ON INFORMATION SESSION WITH UNIVERSITIES IN EUROPE

Can you say more about the 20 credits? Are these ECTS, or another standard?

- The 20 credits are in Indonesian credit units (SKS). 1 Indonesian credit unit= 3 hours per week. 14 weeks= 42 hours. 1 ECTS= 25 hours per week per semester. 20 SKS=  $20 \times 42 / 25 = 33.6$  ECTS. We expect our students to take the same load as the normal load of local students/ international students at your university.

We would like two issues to be discussed. 1. Is there a preliminary requirement for having a cooperation agreement with Indonesian university in order to take part in the Mobility program? 2. What should be student's load per semester? What do 20 credits mean?

- No, interested universities will not need to have previous cooperation agreement with Indonesian Universities. Instead the agreement will be between Indonesia's MoEC and partner university.
- The 20 credits are in Indonesian Credit Units. Our students will take 4 courses in your university. We expect our students to take the same load as the normal load of local students/ international students at your university.

Some universities experienced difficulties in sending email and letters of intent to subpokja email (bounced back). Is there any other alternative email address?

- Please send the email to [beasiswa.iisma@gmail.com](mailto:beasiswa.iisma@gmail.com) in case you experienced this issue

What does it mean that university provides 1,5X credit? (on the previous slide)

- Interested university should curate approximately 10 courses, considering that student will take up 3-4 courses at your university.

when is the deadline for submitting applications from host institutions?

- Interested university should submit the proposal by 16<sup>th</sup> of April, 2021

Is this awards only for 2021? Will this awards be continuing after 2021?

- We expect this program to continue for the following years

If students come for a semester, they are not finished in November, but at the end of December. Is it still possible for students to join our semesters?

- Yes, it is possible

With whom do we (as a receiving university) sign a contract?

- The Directorate of Higher Education, MoEC will sign the contract

many universities in Europa start in October 2021, with semester ending in February 2022 - is this acceptable for the Program?

- We will consider this, please send us your proposal and mention the timeline

if the semester lasts from September till January 2022 (5 months) - does it mean that such duration of mobility is ineligible?

- It is eligible as long as the program last for 1 semester at your university

Hello 20 credits constitutes what percentage of total program? Also how does that translates to ECTS credits?

- The 20 Indonesian credit units equals to 33.6 ECTS. 20 SKS are elective courses and part of 144 SKS undergraduate students must take to graduate. Partner universities will not be responsible for any credit transfer obligation.

Hello, in Australia our semesters run July-November and due to border closures we can only offer virtual programming. Are we still eligible to host under these circumstances?

- Please submit your proposal, we will adapt to the latest policy regarding international travel restriction.

Every course in our university had different admission criteria to check the required knowledge of the student. In your scheme the admission at our university is only at the end stage after selection by MoEC. So theoretically the student could be selected by MoEC for a scholarship, but can not be eligible for the course at our university. How is this arranged?

- We encourage your university to provide the details regarding requirement in the proposal.

How are credits conversed into ECTS?

- If a student admitted to our program, students will be guaranteed 20 credits upon program completion. No specific credit transfer mechanism and learning agreement needed.
- Academic transcripts and certificate of completion will be issued by host university. These transcripts combined with the additional assessment from home university will contribute to the overall grade at home university. The additional assessment will be conducted at home university's own discretion.

How many face to face hours are equivalent to 1 credit unit in Indonesia?

- We 1 Indonesian Credit unit( SKS) = 3 hours per week.

Do Indonesian students select a university abroad they would like to go to?

- Yes, student could choose their host university, considering that they pass the selection by DGHE MoEC Indonesia.

Would you consider aligning the requirements with the recent ASEAN-to-EU mobility program? EU-ASEAN-SHARE, specifically

- No, the program will run on a different scheme.

what is meant by "practical assignment" do you have some more examples of what this could include?

- Practical assignment generally means that student will not only enroll in classes, but get the cultural exposure, ideas exchange, and mingle session with their peers. We do not provide any specific guideline and interested universities can propose any program related to this matter.

Who would pay the training fee to the faculties and when? (Indonesian government agency or student?) Should accommodation be provided or is it enough to help with the location?

- DGCE MoEC will be responsible for paying the tuition fee directly to your universities. We ask for your full cooperation in assisting our students to secure their housing. If possible, we would prefer our students to stay at your in-campus student dormitory.

IS there a proposal format available?

- No, we do not provide a strict proposal format, but in general, the proposal should cover this elements:
  - Cover letter confirming university's interest and summarizing key information of the proposal.
  - One semester program (brief overview, program description, expected output, draft timetable)
  - Key people (roles and responsibilities)
  - Housing options
  - Quarantine and travel restrictions
  - Overall Program Budget & Budget for each student
  - Benefits for Indonesian students
  - Contact person



Good morning, How many students can be expected to nominate to one University and in total from Indonesia in 2021?

- We will assess the number assigned to a specific university after we receive your proposal. 1,000 undergraduate students will be involved in total .

Can we communicate directly with the students prior to selection? (e.g. introduce our univ via Zoom, answer questions in emails?)

- Each university will post their program and the description on our online website and application platform. Link to your website will be provided. Once the students get the award letter, they can contact their host university. Details on the format for this purpose will be online later.

How can we give a program description if we don't know who the eligible students are and what program they will be applying for?

- We encourage your university to provide the details regarding requirement in the proposal.
- The number of courses offered should be limited to approximately 10 courses, and each course should accommodate students from different study discipline (multidiscipline program). With this criteria, we expect courses offered will not be an advanced course.

Could you please give more details about the information we have to fill regarding the "Budget" ?

- We hope that interested universities will provide us with detailed budget that cover all expenses during the program, including but not limited to tuition, living cost, accommodation, transportation, quarantine (if any), health insurance

Because this is not a regular exchange program it is in the Netherlands not allowed to apply for a Study Visum. Students should apply on a tourist visa which is valid for maximum 90 days. This means that it is shorter than a semester. Is it still possible to join this program?

- We hope to exercise all options to enable our students to come and study at your university for 1 full semester. We hope you can advise us on the possible solution for our requirements so that we can send our students to your university.

What platform will be used for IISMA?

- We will use online application platform for registration and selection from MoEC

Are you going to provide us with a template of the agreement?

- We will provide this information later, but if you already have one, you can send it to us for further discussion.

Should University include ONE partner from Indonesia or Several universities in Indonesia? or it must be presented as open offer to all Indonesian students?

- Kampus Merdeka Belajar is built with an aim to provide quality learning to all Indonesia students, so it must be presented as open offer to all Indonesian students
- However, we will select students based on a competitive selection process (GPA, English Proficiency, Interview)

Because of housing difficulties it is always very difficult to host international mobility students at the beginning of our academic year in September. It would be better if students can start later in the year, for example in February. Will it be possible for next years to also have mobility at another moment than September?

- Yes, we expect this program to sustain and expand in the next following years

Can students come for one year, 2 semesters?

- We might consider this for the next intake, but we expect 1 semester of learning for Fall 2021 intake

What stage will the students come? Will they have already completed 2 years of their undergraduate degree programs?

- Undergraduate students from semester 4-7. Bachelor's degree in Indonesia is usually completed in 4 years instead of 3 years

How much the tuition fees are to be expected? There is a huge difference between fields regarding fees

- The cost will be paid at cost to selected participating universities. We hope that universities could give their best offer in the proposal

When does the mobility start?

- We expect to send our students abroad in September, 2021. The selection process will begin in mid May.

Sorry I may have missed your explanation on the contract. Is this after submitting LOI to you?

- Yes, interested university should submit the LOI and proposal before moving towards contract discussion

hello from the University of Pisa in Italy, i missed the first part of the presentation... I am just wondering if the student can stay abroad 6 months because in order to take credits we need to host students at least for 1 full semester

- Yes, the program is for 1 full semester.

What if the semester finishes at the end of January? Will it be possible to participate?

- We will consider this, please send us your proposal and mention the timeline



You mention that host universities must have a cooperation agreement with an Indonesian university already in place. Is it acceptable to make these agreements now at the time of the bid? and the bid would just reflect which universities we hope to work with?

- Host universities do not need to have a cooperation agreement beforehand. Selected partner universities for this program will sign an agreement with DGHE MoEC. If you have already had agreement with Indonesian universities, you can use this Awards to implement your mobility agreement by sending Indonesian students to your university. With your university's own fund, you can send your students to Indonesian universities.

TSI has many different programs we could offer. Is there are specific direction of studies we shall offer? For example, if it is about Business studies, IT, Engineering, Arts, or anything else? What do you expect us to offer?

- Prospective partner universities should curate from available existing courses, and match the course components with 10 skills below:
  - Sense making
  - Novel and adaptive thinking
  - Social intelligence
  - Transdisciplinary
  - New media literacy
  - Computational thinking
  - Cognitive load management
  - Cross cultural competency
  - Design mindset
  - Virtual collaboration
  - Sustainability



We expect 10 courses across faculties to be offered

It is possible to submit a proposal that have a base of Language, culture and soft skill plus a second part in different scientific areas for a total of 20 credits or more?

- Yes, the Language, culture and soft skill can be a part of learning process without the necessity to contribute as a credit-bearing load
- The number of courses offered should be limited to approximately 10 courses, and each course should accommodate students from different study discipline (multidiscipline program). With this criteria, we expect courses offered will not be an advanced course.

Do you think the MoEC scholarships can be offered for Indonesian students in their 4th year of Bachelor study for a mobility in France for one semester in the 1st year of Master? In fact, the Bachelor

duration in Indonesia is 4 years and 3 years in France. It means that some Indonesian students may have the academic level to enter in the 1st year of French Master for credit earning.

- We are not planning to open this to our final year student for this Fall 2021 intake. However, we will consider this as an input for our following program next year.

Should the practical assignments be part of the credit bearing load

- No, they can be co-curricular activities, though.

could these skills be academic i.e.. essay writing and presentation skills?

- Yes, as long as it is not catered for a specific study field, we encourage you to offer this courses

What should be the lines of the budget?

- We considered every aspects of the proposal, including budget. Please propose us your best offer.

We run Summer Course for undergraduate students. Can the Indonesian students come for our Summer Course (Summer term)? (next year summer course)

- We will consider this for the following year program.

Is it possible to submit several proposals - for example, one for Business courses, the other, for IT, etc. What are the preferences of Indonesia universities? Thanks!

- Please submit one proposal comprising courses offered in different faculties. The number of courses offered should be limited to approximately 10 courses, and each course should accommodate students from different study discipline (multidiscipline program). With this criterion, we expect courses offered will not be an advanced course.



My question regarding SHARE was also addressing its fairly accomplished program platform. Would you consider using that platform as a basis?

- We are considering it. We will discuss with EU-SHARE for the possibility.

can we send the course lists as links to our study abroad course catalogue or do we need to list them all in the proposal document?

- Please do not send us the whole courses in your catalogue. We recommend you to curate the courses based on the 10 skills mentioned above.

To clarify, is accommodation for students included in the award or they pay by themselves?

- The award will also cover accommodation. Please advise us the housing options in proposal.

Do you allow students to take combination of courses from different faculties at host university?

- Yes, it is encouraged. We appreciate the diversity of the program.

Is it necessary to already have a partnership with an Indonesian institution prior to applying?

- No, it's not necessary. You can develop partnership with Indonesian universities if you host their students. In fact, we encourage you to do so.

Do the Partner universities have to be rated? I did not understand that.



- International reputation or rankings will just be one of many deciding factor. We also consider the diversity of regions and countries, along with the quality of program that you offered

Hello. I have a question regarding the English requirements. You mentioned only IELTS and TOEFL iBT as part of your selection process. Would you also consider to expand other English tests that some of the universities might accept? E.g. Duolingo or Pearson Test? Thank you.

- We limit the accepted test to IELTS, TOEFL iBT, and TOEFL ITP for this fall semester. We might consider another options in the future

So you don't require a semester long exchange but it can be a sort of Summer program?

- We prioritize a semester long exchange for Fall 2021. We might consider summer program for the following years

What should be included in the reporting at the end?

- It will be transcript and certificate of participation for the students and report about how the program is run.

Greetings from Budapest Business School University of Applied Sciences. My question is the selected universities will sign a contract with the competent institution of the Indonesian government (and the tuition will be remitted directly or the students will pay for their costs including tuitions? Thank you.

- Yes, it is correct
- the tuition will be remitted directly to partner universities. Directorate General of Higher Education, MoEC will sign contract with participating universities.

Will the students apply individually or will LPDP coordinate all the applications/communications between the Universities?

- This program is arranged by DGHE MoEC. We will arrange the communication between universities or applicants

Could we kindly have the sample LOI to express our interest? Thank you

- We do not provide a specific format. The Lol will only need to state that your university is interested to participate in this program

Will preference be given to certain subject areas?

- No, preference will be given to courses that meet the 10 expected skills above

What is your deadline to submit the LOI?

- We expect to receive the Lol and proposal in 16<sup>th</sup> of April, at latest

What currency should the budget be?

- We do not specify any currency for the proposals, but it will be wiser to use your local currency

Who would pay the training fee to the faculties and when? (Indonesian government agency or student?)

- The payment will be remitted by DGHE MoEC on the time specified later in the contract



1) If virtual courses could be considered how the practical assignment should look like? Even though classes are online, student need to attend practice personally?

2) How long should the practical assignment last? Can we offer practice at the university or at the external company?

- 1) We hope that the activities/ assignments could reflect the expected outcome.
- 2) No, what is meant by practical assignment is the type of assignment where students do not only sit in a class and listened to lectures, but could also practice their communication skills, network, and expand their knowledge. E.g. group assignments, presentations, projects.
- Considering the duration of program, we are not expecting an internship at external company, but company visits arranged by your company might be a good example of extra curricular activities

3) What is the amount of the grant? the amount of the grant depends on our calculations?

- The grant will cover all expenses. However, we will select the incoming proposals and select them on a competitive basis

Hello, Is English the only possible language for the courses? What about courses taught in French? (for the students who might have a B1 or B2 level of French) thank you

- It is possible, we will assess this possibility. Please send us your proposal

The Indonesian students will be shortlisted. However, our regulations prescribe us to arrange and admission process. Would it be possible for applying students?

- Most of the selection process will be done by DGHE MoEC. However, in this case, your university might be able to provide the final confirmation before accepting our students. Another way around is to specify this admission criteria in the proposal so we could match the requirements





Kampus  
Merdeka  
INDONESIA JAYA

UNIVERSITY LOGO

## INDONESIAN INTERNATIONAL STUDENT MOBILITY AWARDS

Proposal

(University Name, Country)

### Important Notes:

- Starting from Saturday, April 3, 2021, all proposals should be submitted through <http://bit.ly/ProposalSubmission-IISMA>
- Proposal should be submitted on April 16, 2021, the latest
- Please rename your proposal as follows: **"university name – P"**  
e.g. Proposals from University of Manchester = University of Manchester – P
- This guideline serves to help prospective partner universities in drafting the proposal, please do not treat this document as the template, we encourage each university to explore their own proposal design
- Feel free to include any additional relevant information in the proposal

2021

## Brief Overview

*please provide brief overview of your University and overview of the program*



## Program Description

*please provide*

- *list of course names and available quota for each courses (for students in our program)*
- *course description*
- *program features apart from regular courses*
- *additional information regarding the program*



## Draft Timetable

*Please provide the program timeline, including academic calendar and any additional information worth mentioning*

### Example

Activity	Duration	Periode
Registration New Student		August - September
Orientation Week	1 week	04 October - 11 October
Lectures	5 weeks	12 October - 15 November
Mid-term Break	1 week	16 November - 22 November
Lectures	9 weeks	23 November - 24 January
Final Examination	3 weeks	25 January - 14 February
Semester Break	3 weeks	15 February - 7 March

## Eligibility

Please provide the list of requirements to enroll for this program at your university.

### Example

Students must meet the following entry requirements:

1. Have good academic standing with CGPA not less than 3.0 over a 4.0 scales or equivalent
2. Have good English proficiency in speaking and writing (TOEFL ITP score, IELTS score, TOEFL IBT score), specify the score if your university require

## Estimated Budget

You should arrange this estimated budget calculation for one **individual**, we will multiply this number according to the students enrolled to your university

No.	Descriptions	Amount (local currency)
1.	Tuition	Please provide tuition fee per semester on your university. (you could specify each tuition components e.g. cost for each credit, but we will need the final calculation for <b>tuition</b> )
3.	On-Campus Accommodation	Please provide on-campus accommodation fee per semester on your university. (the final amount provided should cover student's entire accommodation expense during his/ her stay in your country)
4.	External Accommodation	If no on-campus accommodation available, Please provide estimated external accommodation fee per semester. (the final amount provided should cover student's entire accommodation expense during his/ her stay in your country)
5.	Visa Application,	Please provide estimated fee for visa application.
6.	Medical Insurance	Please provide estimated fee for medical insurance.
7.	Mandatory COVID-19 Quarantine	Please provide estimated mandatory covid-19 quarantine cost, if applicable.
8.	Living Expenses	Please provide estimated living expenses per month e.g. Transportation, meals, entertainment, miscellaneous, etc. for international students
9.	Others	

<b>Total</b>		

## Relevant information via the link below:

### 1. Visa for Indonesian Student :

- *What type of visa should student apply for?*
- *How long should the process last? (from the registration to visa issuance)*
- *What is your university role in assisting this process?*
- *Any additional information regarding visa application process*
- *Relevant link (if any)*

### 2. Medical Insurance :

- *What type of medical insurance do international students take?*
- *What is your university role in assisting this process?*
- *Any additional information regarding medical insurance*
- *Relevant link (if any)*

### 3. Medical Screening :

- *What is the expected health and safety protocol that we need to consider?*
- *Please tell us more on the medical screening process, especially in terms of vaccination and COVID test?*
- *Do our students need to undergo quarantine process upon arrival?*
- *What is your university role in assisting this process?*
- *Relevant link (if any)*



### 4. Housing and Living :

- *Please provide us with details on housing options available at your university*
- *Accessibility to halal food in campus area*
- *Relevant link (if any)*

## Contact Person

### Director of International Student Center

Name : *please provide name of Director of International Student Center*  
 Email : *please provide email address of Director of International Student Center*  
 Telephone : *please provide Telephone of Director of International Student Center*  
 Fax : *please provide Fax of Director of International Student Center*  
 Mobile : *please provide Mobile of Director of International Student Center*

### Staff of International Student Center

Name : *please provide name of staff of International Student Center*  
 Email : *please provide email address of staff of International Student Center*  
 Telephone : *please provide Telephone of staff of International Student Center*  
 Fax : *please provide Fax of staff of International Student Center*  
 Mobile : *please provide Mobile of staff of International Student Center*