

## 科技部 函

機關地址：台北市和平東路二段106號  
聯絡人：高亞眉  
電話：02-2737-7559  
傳真：02-2737-7607  
電子信箱：yamgau@most.gov.tw

受文者：國立中興大學

發文日期：中華民國103年9月23日

發文字號：科部科字第1030069764號

速別：速件

密等及解密條件或保密期限：

附件：如文（103D2022438.PDF）（GSSATTCH1 103D2022438.PDF）

主旨：敬請推薦 貴機構優秀青年學者參加2015年「第65屆(第四屆跨領域)林島諾貝爾獎得主會議 (The 65th Lindau Nobel Laureate Meeting (the 4th Interdisciplinary Meeting)」，請 查照。

說明：

- 一、旨揭活動為每年在德國林島舉辦之科學論壇，邀請諾貝爾獎得主與世界各國年輕學者共聚一堂，透過演講、會談與小組討論等方式，提供大師與各國年輕菁英直接交流之平台，以達教育與啟發新一代優秀學人之目的；每年大會主題不同，2015年以物理學、生理學、醫學、與化學為跨領域會議主題。
- 二、「第65屆物理、生理、醫學、化學跨領域林島諾貝爾獎得主會議」預計於2015年6月28日至7月3日舉行，將邀請約70名諾貝爾獎得主與全球620位青年科學家與會。與會者需為35歲以下已獲得博士學位並從事相關工作之研究人員（取得博士學位5年內）、博碩士班研究生，詳細遴選標準請見附件1。
- 三、本部受主辦單位邀請，推薦至多3位物理學、生理學、醫學、與化學等相關領域之青年學員參加本項盛會。





訂

線

四、敬請於本（103）年10月17日下班前，推薦貴校具中華民國國籍、在校成績優異、對學術研究具高度熱忱且英語流利之年輕學員；該學員須符合附件資格且未曾參與過此項活動。來文請具備以下英文正本文件：

(一)至少一份推薦信。推薦信為主辦單位複審之重要依據，請充分表達被推薦人之研究創意與學術傑出表現。

(二)被推薦人履歷（一頁），含基本資料與電子郵件住址。

(三)參加會議意願信：說明參加此項會議對其個人學術及研究生涯之意義（一頁）。

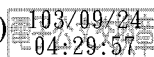
(四)在校成績、發表論文與英文能力證明（副本）。

五、獲本部推薦且通過主辦單位複審、受邀與會者，本部將支付每人往返交通費與二分之一出席費1,250歐元；另二分之一出席費1,250歐元將由主辦單位支付。

六、請參考主辦單位網站[www.lindau-nobel.org](http://www.lindau-nobel.org)。

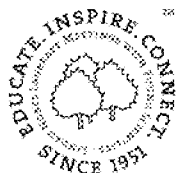
正本：國立臺灣大學、國立成功大學、國立清華大學、國立交通大學、國立中央大學、國立中山大學、國立陽明大學、國立中興大學、國立臺灣科技大學、國立台灣師範大學、臺北醫學大學、高雄醫學大學、中國醫藥大學、國立高雄大學、國立台南大學、國立臺北科技大學、長庚大學、輔仁大學、慈濟學校財團法人慈濟大學、馬偕醫學院、中山醫學大學

副本：駐德國代表處科技組、本部科教國合司、自然科學及永續研究發展司、生命研究發展司、工程技術研究發展司(均含附件)



部長張善政





# LINDAU NOBEL LAUREATE MEETINGS

## Selection Criteria 2015

for the 65<sup>th</sup> Lindau Nobel Laureate Meeting, the 4<sup>th</sup> Interdisciplinary Meeting with Nobel Laureates from the fields of Physics, Physiology or Medicine and Chemistry

For the 2015 Interdisciplinary Lindau Nobel Laureate Meeting to be held from June 28 – July 3, 2015, Nobel Laureates in Physics, Chemistry and Physiology or Medicine will be invited.

About 620 highly-talented young scientists will be the audience for their lectures, for panel discussions on interdisciplinary topics and for small-size discussion sessions.

These young participants will be recruited worldwide among (1) undergraduate students, (2) master and doctoral students and (3) young postdoctoral scientists in the field of Physics, Chemistry, Physiology or Medicine and closely related disciplines.

The following standards and criteria have been defined for their selection:

All nominated participants shall

- show a genuine interest in science and research,
- show a strong commitment to their principal field of studies and to interdisciplinary work, for example by double degrees or interdisciplinary projects
- receive strong support of their application by their academic advisor and/or by internationally renowned scientists, through a detailed letter of recommendation,
- be fluent in English and capable of active participation in discussions,
- belong to the top 5 percent of their class,
- not already have a permanent position (Researchers with permanent positions – in particular on the professor level – will in general not be admitted to the meeting),
- not older than 35 years of age
- not have participated in previous Lindau Meetings,
- **deliver fully completed applications** in their online profiles on or before the deadline of November 30, 2014  
(Responsibility of the nominated individuals; incomplete applications will not be considered), and
- commit themselves to being present for the full duration of the meeting

It is intended to have a good balance between these three groups:

(1) Undergraduate students, who

- exhibit a solid general knowledge in physics or chemistry or physiology/medicine and
- have done some practical work and/or have laboratory experience.

(2) Master and doctoral students, who

- show excellent academic accomplishments and
- have produced some very good research work.

(3) Postdoctoral scientists, who

- have up to 5 years of postdoctoral experience (optimum about 2-3 years after doctoral degree),
- have published results of own scientific research in refereed journals, preferably as first author, and
- have presented their work at international scientific meetings, preferably as lecturers.